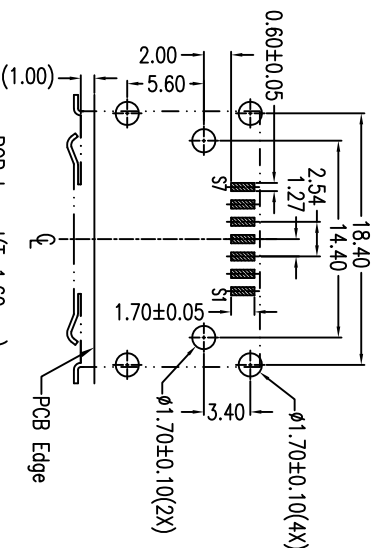
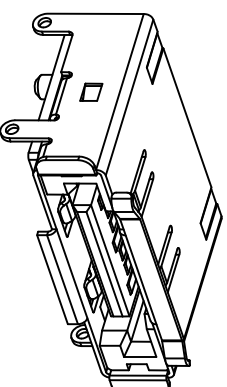
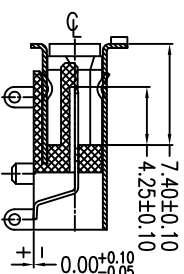
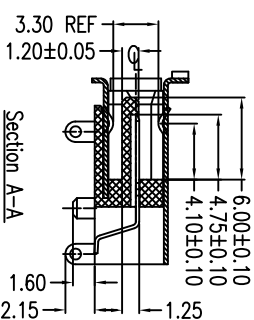
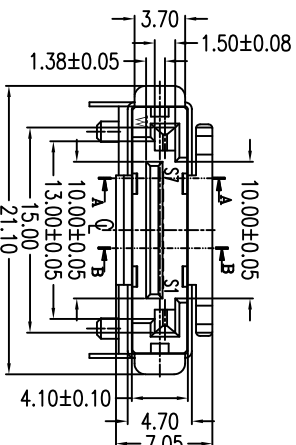
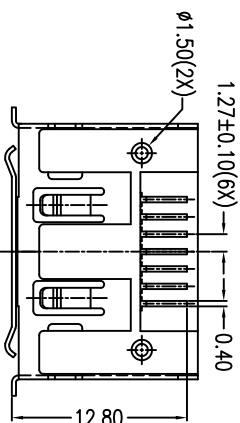
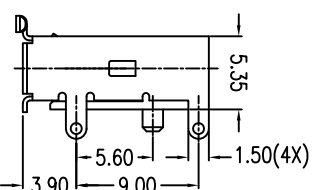
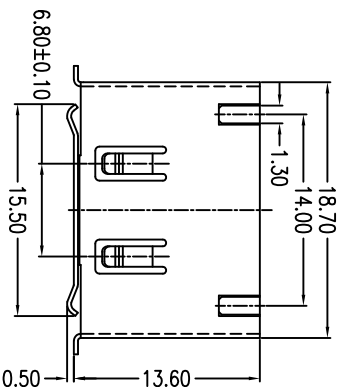


PIN Signal Define	
PIN NO.	Signal Name
S1	GND
S2	A+
S3	A-
S4	GND
S5	B-
S6	B+
S7	GND



NOTES:

*Material

Housing: LCP+50%G.F, UL 94V-0 Rated;
Contact: Brass;
Plating: Au plating on contact area,
Sn(100u" Min) Plating on Solder Tail,
Ni(40u" Min) underplating over all.

*Mechanical

Insertion Force: 40N Max;
Withdrawal Force: 10N Min;
Durability: 2500 cycles.

*Electrical Specification

Operation Voltage:100V AC Max;
Current Rating: 1.5 Ampere per contact;
Contact Resistance: 30mΩ Max;
Insulation Resistance: 1000MΩ Min;
Dielectric Withstanding Voltage: 500V AC.

*Environmental

Operating Temperature : -55°C to +85°C.

*How to order:

HSAT-M07-R5S-RS
S:SMT
Au F:FLASH 5:15u" 3:30u"
Number of contacts
SATA Series

Units	mm	Scale	5:3	Drawing By	Date	IF TECHNOLOGY, INC.			
Tolerance Unless Otherwise Specified				May	11/21-'12	TEL:886-3-5511680 FAX:886-3-5511605			
.X	±0.38	Reviewed By		Date	11/21-'12	Date	11/16-'10	Title	ESATA 7Pin Right Angle Standard SMT Single Spring
.XX	±0.25	Sharon		Date	11/21-'12	Sheet	1 of 1		
.XXX	±0.20	Approval By		Date	11/22-'12	Third Angle Projection		Drawing No.	HSAT-M07-R5S-RS
Angle	± 3°	Jason						REV	D