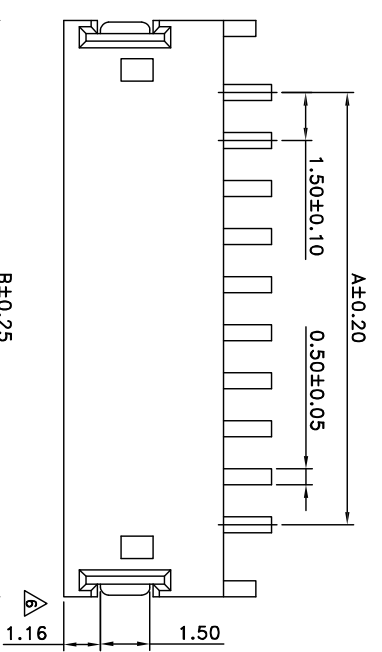
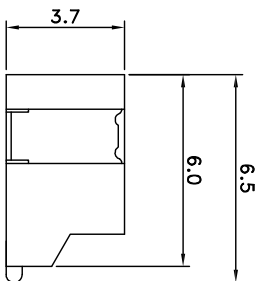
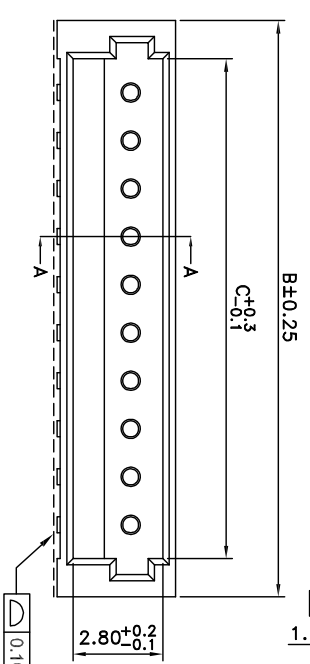
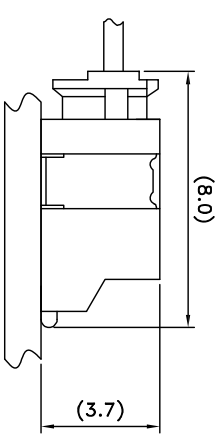


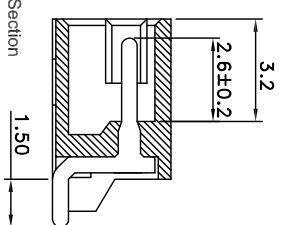
- SPECIFICATIONS
- Voltage Rating : 50V AC/DC
 - Current Rating : 1A AC/DC
 - Withstanding Voltage : 500V AC/minute
 - Insulation Resistance : 500M Ω min
 - Temperature Range : - 25℃ to + 85℃
 - Contact Resistance : 20m Ω max
- WAFER
- Part No. : HW15-0xx-R0S-00
- _____ Poles No. : 2 ~ 15(Right Angle)
- Material :
1.Contact : Brass, Plated; Tin Plated
2.Base: Nylon 9T UL94V-0
Base Color : Natural
- Packing :1000PCS/ Tape & Reel



△ Assembly Layout (REF.)



A-A Section



Poles	Dimensions (mm)		
	A	B	C
2	1.50	6.00	3.60
3	3.00	7.50	5.10
4	4.50	9.00	6.60
5	6.00	10.50	8.10
6	7.50	12.00	9.60
7	9.00	13.50	11.10
8	10.50	15.00	12.60
9	12.00	16.50	14.10
10	13.50	18.00	15.60
11	15.00	19.50	17.10
12	16.50	21.00	18.60
13	18.00	22.50	20.10
14	19.50	24.00	21.60
15	21.00	25.50	23.10



益富科技有限公司
TEL:886-3-5511680 FAX:886-3-5511605

PART NO HW15-0xx-R0S-00

1.50mm SMT Series Wire to Board Connector Wafer

APPROVED BY	SCALE	UNIT	TOLERANCE	LTR	REVISION RECORD	NAME	DATE	LTR	REVISION RECORD	NAME	DATE
張育瑞		mm	.0 ±0.30	△	ECR200407-004	邱森瑞	2004/07/14	△			
CHECKED BY	PROJ	VER NO.	.00 ±0.20	△	ECR200506-004	龔志紅	2005/06/07	△			
Brin		d6	.000 ±0.10	△	ECR200806-001	黃科源	2008/06/03	△			
DRAWN BY	DATE	SIZE	ANGLE	△	ECR200903-007	黃科源	2009/03/13	△			
吳弘文	2014/08/13	A4	0° ±1°	△	圖面合併, 增加顏色選項	吳弘文	2012/08/20				
		SHEET	0° ±	△	增加接地片位置標示	吳弘文	2014/08/13				
		1/1	△								

CUSTOMER

Conforms to The RoHS Instruction