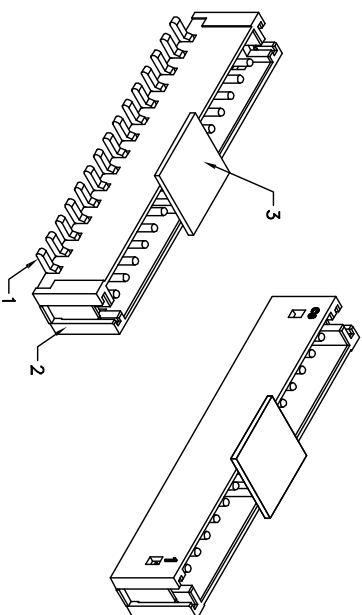


Recommend PCB Layout



- SPECIFICATIONS
- Voltage Rating : 50V AC/DC
- Current Rating : 1A AC/DC
- Withstanding Voltage : 500V AC/minute
- Insulation Resistance : 500M Ω min
- Temperature Range : - 25 $^{\circ}$ C to + 85 $^{\circ}$ C
- Contact Resistance : 20m Ω max
- WAFER
- Part No. : HW15-0xx-V0S-00
- Poles No. : 2 ~ 15(Straight)

- Material :

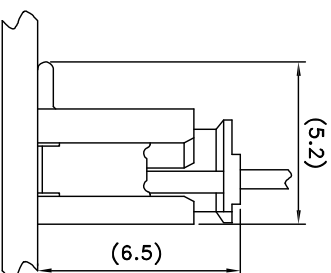
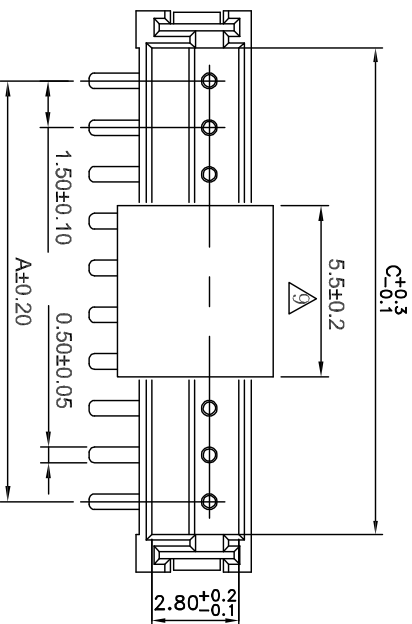
1.Contact : Brass, Plated: Tin Plated

2.Base: Nylon 9T UL94V-0

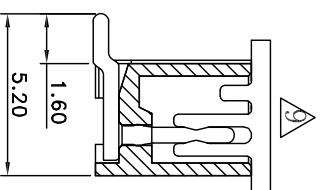
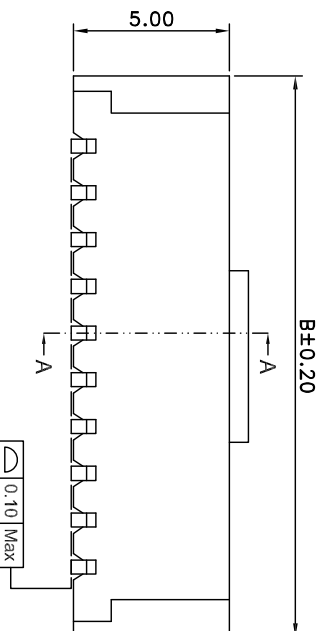
Base Color : Natural

3.Cap:Nylon PA46 UL94V-0

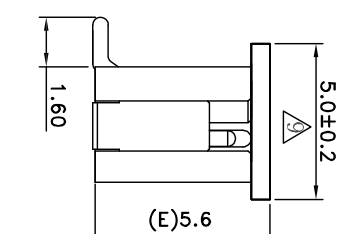
- Packing : 1000PCS/ Tape & Reel



Assembly Layout (REF.)



A-A Section



With Cap

Poles	Dimensions (mm)		
	A	B	C
2	1.50	6.00	3.60
3	3.00	7.50	5.10
4	4.50	9.00	6.60
5	6.00	10.50	8.10
6	7.50	12.00	9.60
7	9.00	13.50	11.10
8	10.50	15.00	12.60
9	12.00	16.50	14.10
10	13.50	18.00	15.60
11	15.00	19.50	17.10
12	16.50	21.00	18.60
13	18.00	22.50	20.10
14	19.50	24.00	21.60
15	21.00	25.50	23.10



益富科技有限公司

TEL:886-3-5511680 FAX:886-3-5511605

PART NO HW15-0xx-V0S-00

1.50mm SMT Series Wire to Board Connector Wafer

APPROVED BY	SCALE	UNIT	TOLERANCE	LTR	REVISION RECORD	NAME	DATE	LTR	REVISION RECORD	NAME	DATE
張育瑞	1 : 1	mm	±0.30	△	ECR RoHS compliant	龔志紅	2005/05/23	△	合併圖面	吳弘文	2012/08/20
CHECKED BY	PROJ	VER NO.	.00 ±0.20	△	ECR200506-003	龔志紅	2005/06/07	△	修改蓋子部份的結構	王睿	2015/05/18
周家慶			.000 ±0.10	△	ECR 200601-008	陳文松	2006/01/06	△△			
DRAWN BY	DATE	SIZE	ANGLE	△	ECR 200802-014	黃科源	2008/02/26				
王睿	2015/05/18	A4	0° ±1°	△	ECR 200805-011	黃科源	2008/05/27		CUSTOMER		
			0° ±	△	ECR 200903-007	黃科源	2009/03/13				
			SHEET 1/1	△	ECR 200912-003	林文泰	2009/12/17		Conforms to The RoHS Instruction		