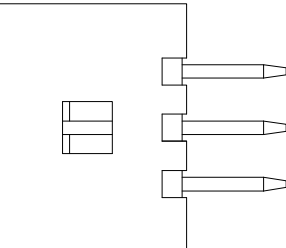
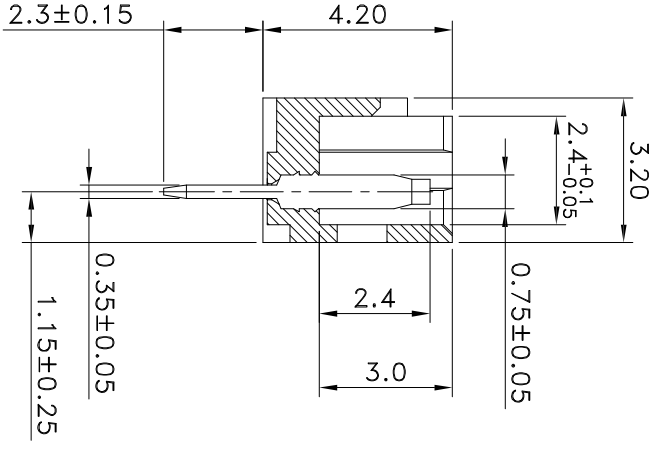
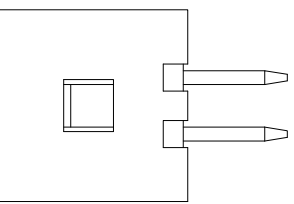


Recommended PCB Layout(Top View)



3 Circuit



2 Circuit

SPECIFICATIONS

- Voltage Rating : 250V AC/DC
- Current Rating : 1A AC/DC
- Withstanding Voltage : 250V AC /minute
- Insulation Resistance : 100MΩ min
- Temperature Range : - 40℃ to + 85℃
- Contact Resistance : 20mΩ max

WAFER

- Part No. : HW12-0XX-V0D-00

Code No.

① Poles : 2 - 15(DIP Type)

- Material : Contact : Brass, Tin Plated
Base : Nylon 66 UL94V-0
- Package : PVC Box

Poles	Part No.	Dimensions (mm)		
		A	B	C
2	HW12-002-V0D-00	1.25	4.25	3.05
3	HW12-003-V0D-00	2.50	5.50	4.30
4	HW12-004-V0D-00	3.75	6.75	5.55
5	HW12-005-V0D-00	5.00	8.00	6.80
6	HW12-006-V0D-00	6.25	9.25	8.05
7	HW12-007-V0D-00	7.50	10.50	9.30
8	HW12-008-V0D-00	8.75	11.75	10.55
9	HW12-009-V0D-00	10.00	13.00	11.80
10	HW12-010-V0D-00	11.25	14.25	13.05
11	HW12-011-V0D-00	12.50	15.50	14.30
12	HW12-012-V0D-00	13.75	16.75	15.55
13	HW12-013-V0D-00	15.00	18.00	16.80
14	HW12-014-V0D-00	16.25	19.25	18.05
15	HW12-015-V0D-00	17.50	20.50	19.30

益富科技有限公司

TEL:886-3-5511680 FAX:886-3-5511605

PART NO

HW12-0XX-V0D-00

APPROVED BY

陳傑森

SCALE

UNIT

mm

CHECKED BY

PROJ

VER NO.

DRAWN BY

周家慶

DATE

SIZE

Q9

TOLERANCE

±0.30

LTR

△

REVISION RECORD

NAME

邱森鴻

DATE

2005/09/02

LTR

△

REVISION RECORD

修正Pitch 公差

NAME

吳弘文

DATE

2012/06/27

ANGLE

±1°

△

ECR 200805-014

黃科源

2005/09/02

△

CUSTOMER

0°

±

△

ECR 200808-012

黃科源

2005/09/02

△

Conforms to The RoHS Instruction

SHEET

1/1

△

ECR 200907-003

黃科源

2005/09/02

△