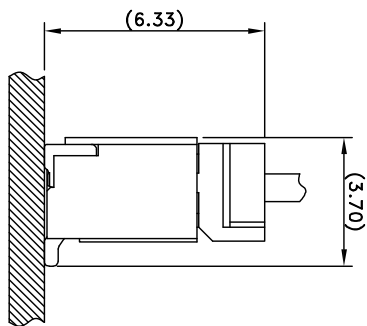
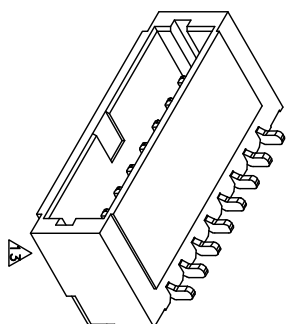


RECOMMEND PCB LAYOUT
General tolerance ± 0.05



ASSEMBLED ALL PART VIEW



3D VIEW

■ SPECIFICATIONS

- ▲ Current Voltage : 50V AC/DC
- Current Rating : 1 A AC/DC
- Withstanding Voltage : 500V AC/minute
- Insulation Resistance : 100M Ω min
- Temperature Range : - 25 $^{\circ}$ C to + 85 $^{\circ}$ C
- Contact Resistance : 20m Ω max
- WAFER (SMT Type)
- Part No. : HW10-0xx-V0S-00

Poles : 02~22

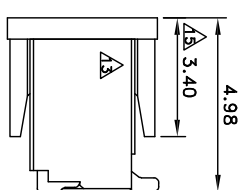
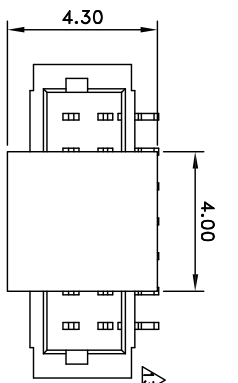
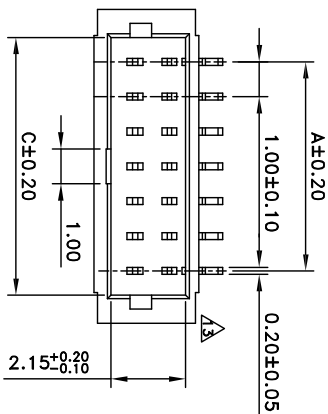
● Material :

1. Contact : Phos. Bronze Plated : Tin Plated
2. Solder Tab : Brass
3. Base : Nylon 9T UL94V-0 Base Color : Nature

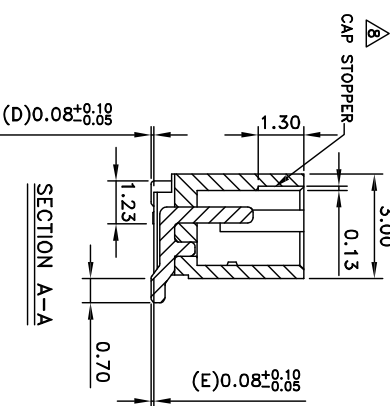
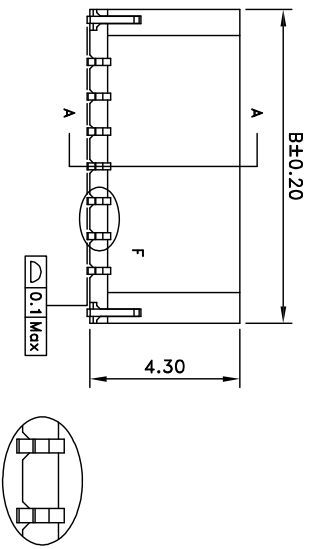
● Q'ty : 1,000 pcs./Tube

● Q'ty : 1,000 pcs./Reel /With Cap

※ Note : Cap Stopper for Fixed Position



ASSEMBLED CAP VIEW



Poles	Dimensions (mm)			Dimensions (mm)		
	A	B	C	A	B	C
2	1.00	4.00	2.45	13	12.00	15.00
3	2.00	5.00	3.45	14	13.00	16.00
4	3.00	6.00	4.45	15	14.00	17.00
5	4.00	7.00	5.45	16	15.00	18.00
6	5.00	8.00	6.45	17	16.00	19.00
7	6.00	9.00	7.45	18	17.00	20.00
8	7.00	10.00	8.45	19	18.00	21.00
9	8.00	11.00	9.45	20	19.00	22.00
10	9.00	12.00	10.45	21	20.00	23.00
11	10.00	13.00	11.45	22	21.00	24.00
12	11.00	14.00	12.45			

DETAIL F (SCALE 2:1)



益富科技有限公司

TEL:886-3-5511680 FAX:886-3-5511605

PART NO HW10-0xx-V0S-00

1.00mm WIRE TO BOARD CONNECTOR, SMT & STRAIGHT

APPROVED BY	SCALE	UNIT	TOLERANCE	LTR	REVISION RECORD	NAME	DATE	LTR	REVISION RECORD	NAME	DATE
張育瑞		mm	±0.30	▲	新增CAP STOPPER位置說明	黃科源	2009/05/07	▲	增CAP尺寸標示	吳弘文	2013/12/06
CHECKED BY	PROJ	VER NO.	±0.20	▲	新增無鹵選項並合併圖面	金龍	2010/11/01	▲	增加電鍍鍍線段及修改用料	黃廣珍	2014/03/04
DRAWN BY	DATE	SIZE	±0.10	▲	新增LCP材料	王誠發	2012/05/29	▲	無鹵代碼"PF"刪除,與圖重複	鄭小嬌	2015/10/26
周家慶		q17	ANGLE	▲	新增NH選項及修改原NH為HF	林謙豪	2012/06/07				
鄭小嬌		A4	±1 $^{\circ}$	▲	修正編碼選項	吳弘文	2013/02/25				
		SHEET	±	▲	修改接地片位置	黃廣珍	2013/04/19				
			1/1	▲	增列額定電壓	吳弘文	2013/08/08				

CUSTOMER

Conforms to The RoHS Instruction