

REV.	ECN NO.	DATE
A	RELEASED	10/11-'07
B	Modify Notes	09/22-'08
C	Modify Drawing	07/10-'10

## NOTES:

### \*Material

Housing: LCP,UL 94V-0Rated;Color:Black.  
Shield: Brass.  
Plating: Nickel(40~80u") Plating .  
Contact: Brass.  
Plating: Gold Plating Over Nickel(40~80u") on  
Contact Area; Tin(100~250u") Plating  
On Solder Tail.

### \*Electrical Specification

Operation Voltage: 40 VAC max.  
Current Rating: 0.5 Ampere per contact  
Contact Resistance: 30 mΩ max.  
Insulation Resistance: 100 MΩ min.  
Dielectric Withstanding Voltage: 500 VDC

### \*Environmental

Operating Temperature: -20°C to +85°C

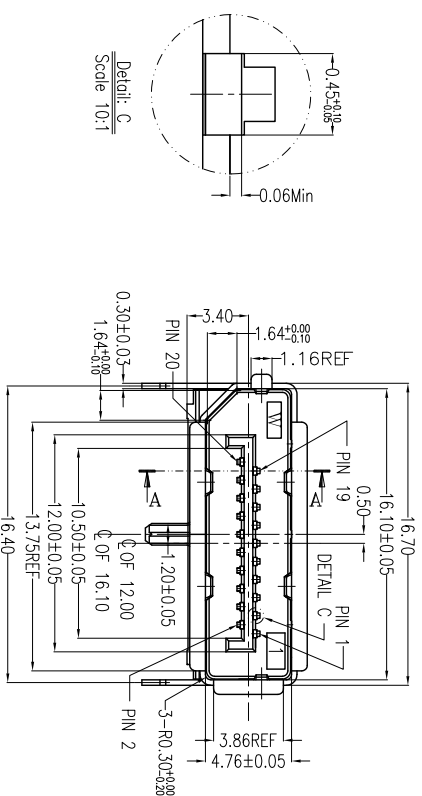
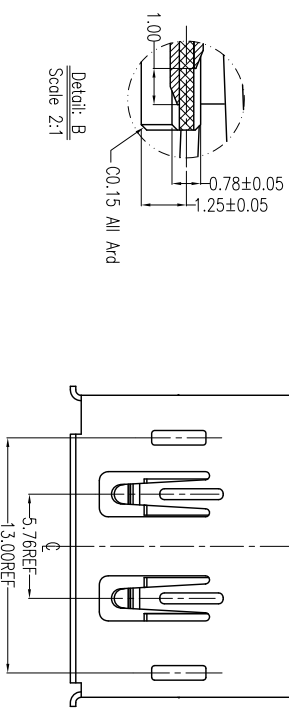
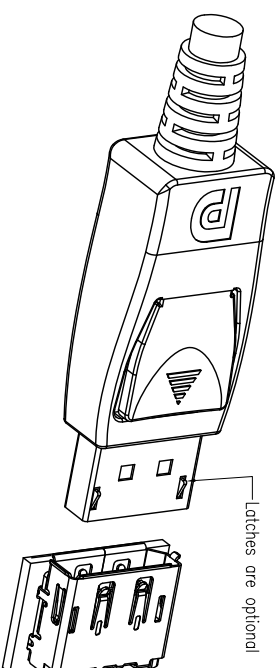
### \*How To Order

HDPP-020-R3S-00

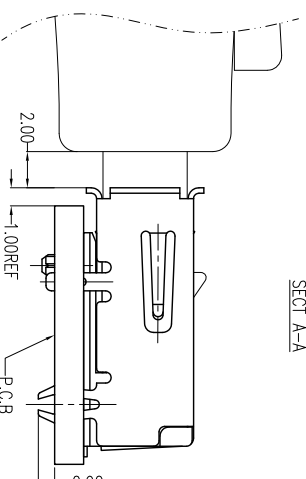
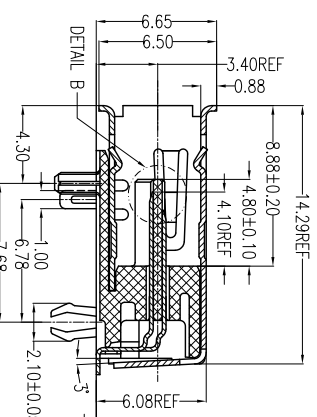
Gold F:Flash 5.15u" 3.30u"

Number of Contacts

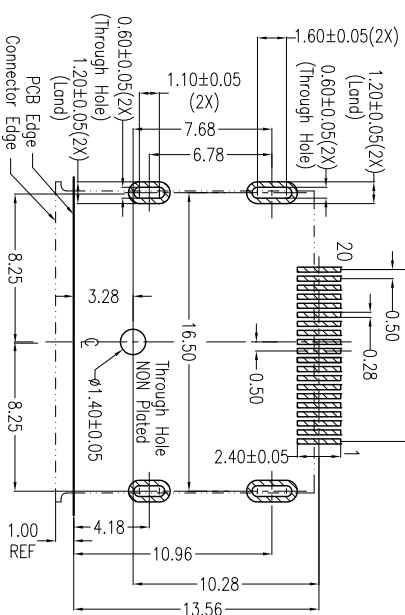
Series NO.



SECT A-A



Fully mated condition



P.C.B Layout(=1.60mm)  
COMPONENT SIDE

Units	mm	Scale	1:1	Drawing By	Data
Tolerance Unless Otherwise Specified				JIMMY	07/12/10
.X	±0.38			Reviewed By	Data
.XX	±0.25			SHARON	07/12/10
.XXX	±0.20			Approval By	Data
Angle	± 3°			JASON	07/12/10

益 雷 科 技 有 限 公 司	益 雷 科 技 有 限 公 司
TEL: 886-3-5511680	FAX: 886-3-5511505
Date	07/10-'10
Sheet	1 of 1
Third Angle Projection	
Title	DisplayPort Receptacle (Female)
SMT Type	
Drawing No.	HDPP-020-R3S-00
REV	C