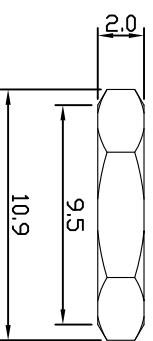
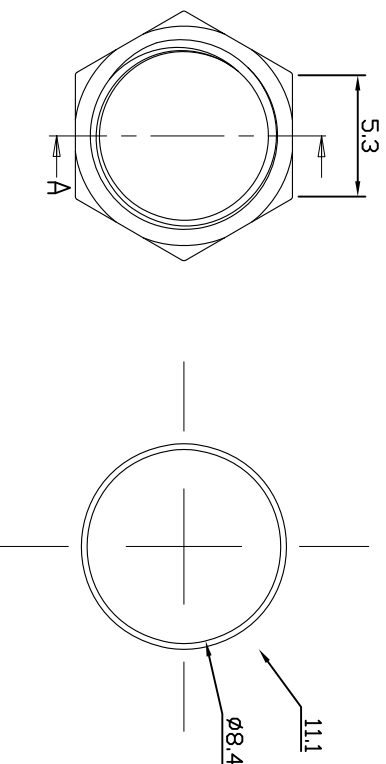
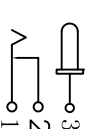


PIN	HON	KON	P/N
2.0	HDCJ-0025M-2.0		
2.35	HDCJ-0025M-2.35		
2.5	HDCJ-0025M-2.5		

SPECIFICATION

1. Rating : DC 30V 0.5A
2. Contact resistance : $\leq 0.03\Omega$
3. Insulation resistance : $\geq 100M\Omega$ (DC250V)
4. Withstand voltage : 500VAC
5. Insertion and extraction force : 3-20N
6. life test : 5,000 cycles

SCHEMATIC



NO.	DESCRIPTION	QTY	MATERIAL	PLATING
6	HOUSING	1	PBT	
5	AXIS SUPPORT	1	BRASS	Ni-Plating
4	PIN	1	BRASS	Ni-Plating
3	FLAT PIECE	1	BRASS	Sn-Plating
2	CURVE PIECE	1	BRASS	Sn-Plating
1	SPRING	1	BRONZE	Sn-Plating

UNLESS OTHERWISE
SPECIFIED
TOLERANCES ARE

x	±0.30
xx	±0.20
xxx	±0.10
x°	±3.0°
xx°	±2.0°
xxx°	±1.0°



UNIT: MM

TYPE:

DC POWER JACK

MODEL NO:

HDCJ-0025M-X

PAPER NO: A4

PAGE 1 OF 1

SCALE VER

3:1 1

DESIGNER BY:	Peter	2010.10.01
CHECK BY:	Sharon	2010.10.01
APPROVED BY:	Jason	2010.10.01



益富科技有限公司
TEL:886-3-5511680 FAX:886-3-5511605